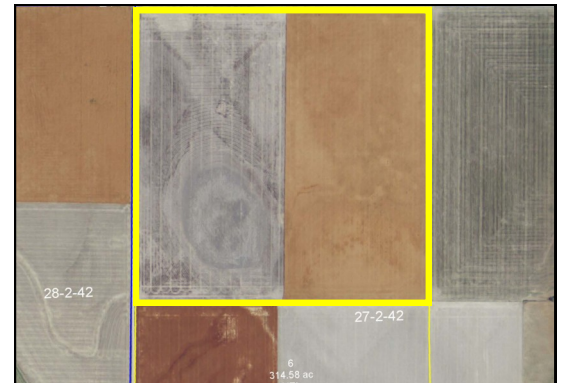
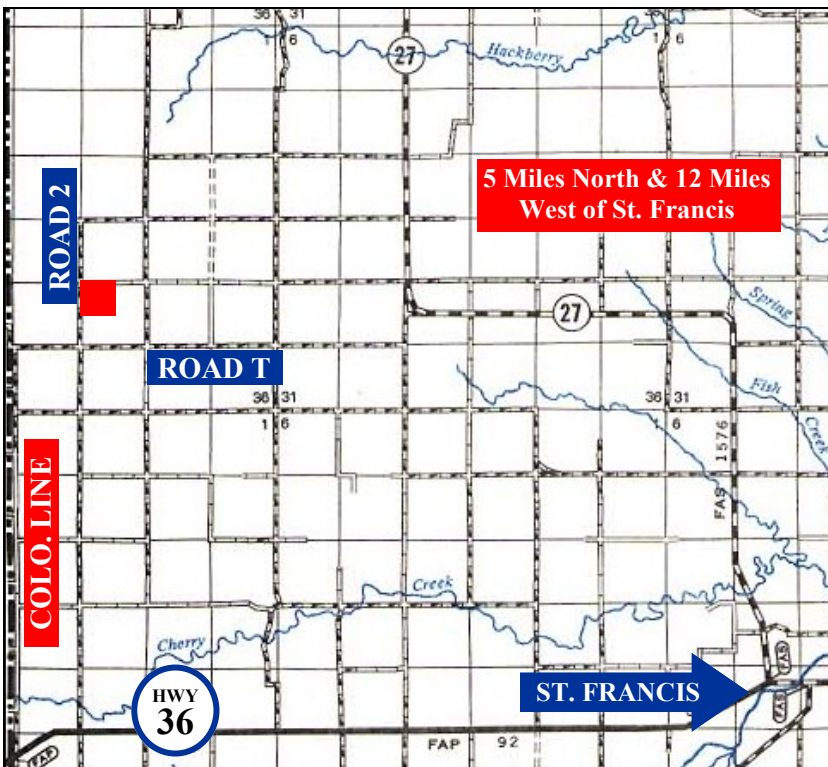


# FOR SALE

## PRODUCTIVE QUARTER CHEYENNE CO. DRYLAND

ED & CARLA SEAVEY, SELLERS



*160± Acres Cropland  
NW/4 Sec. 27, 2-42  
Cheyenne Co., KS*

- No current leases on land after 2016 wheat harvest.
- Buyer will receive Seller's 1/3 share of wheat planted on Tract.
- Stubble on Tract has been sprayed for weeds.
- Possession day of closing on open ground after 2016 harvest on planted acres.

- 67.21 ac. wheat base w/40 bu. yield
  - 19.05 ac. corn base w/42 bu. yield
  - Approx. 80 acres planted wheat.
- Approx. 2015 Taxes: \$594*

**Listed Price:  
\$1,950 per acre**



Rodney W. Shay, Broker  
785-332-5656 Cell

# SHAY REALTY

P.O. Box 576, 107 E. WASHINGTON ST., ST. FRANCIS, KS 67756  
800-476-7185 OR 785-332-2566  
WWW.SHAYREALTY.COM