

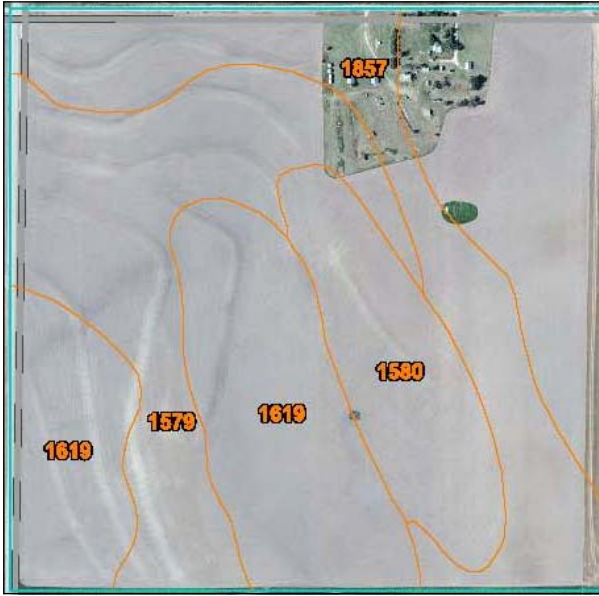
FOR SALE

DIRECTIONS TO SITE

Go 3 miles west of Bird City on Highway 36, turn south on Road 24 and go 1 mile south to Road M.

3 QUARTERS CHEYENNE CO. DRYLAND

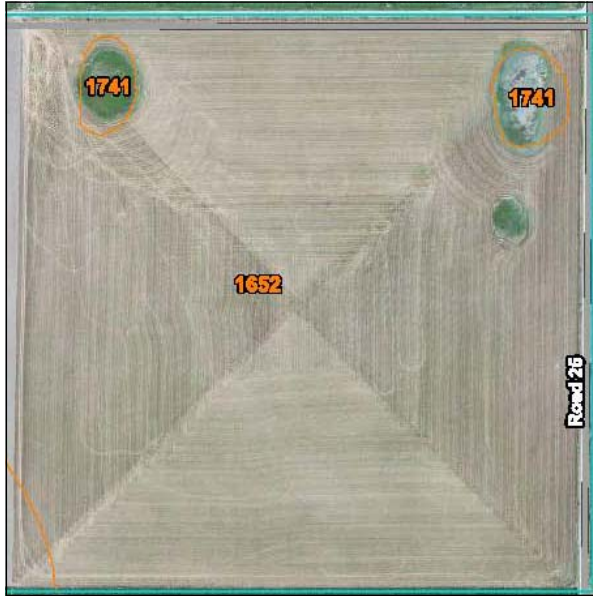
HARRIS ESTATE, SELLER



Tract 1 - 160± Acres

NW/4 Sec. 5, 4-38 Cheyenne Co., KS
156.47± Acres Cropland

- 72.5 ac. wheat base w/35 bu. yield
 - 12.4 ac. barley base w/41 bu. yield
 - Home, Improvements & small acreage subject to Life Estate.
 - Approx. 145 acres planted wheat.
- Approx. 2013 Taxes: \$872.84



Tract 2 - 160± Acres

NE/4 Sec. 5, 4-38 Cheyenne Co., KS
158.27± Acres Cropland

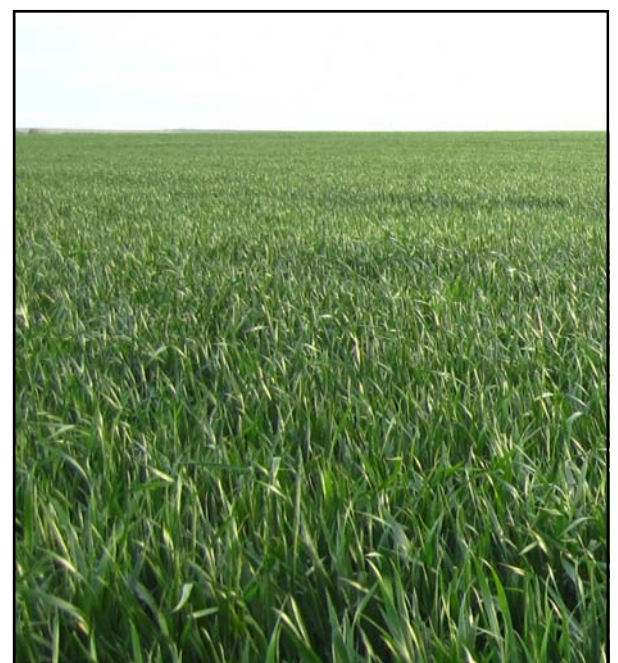
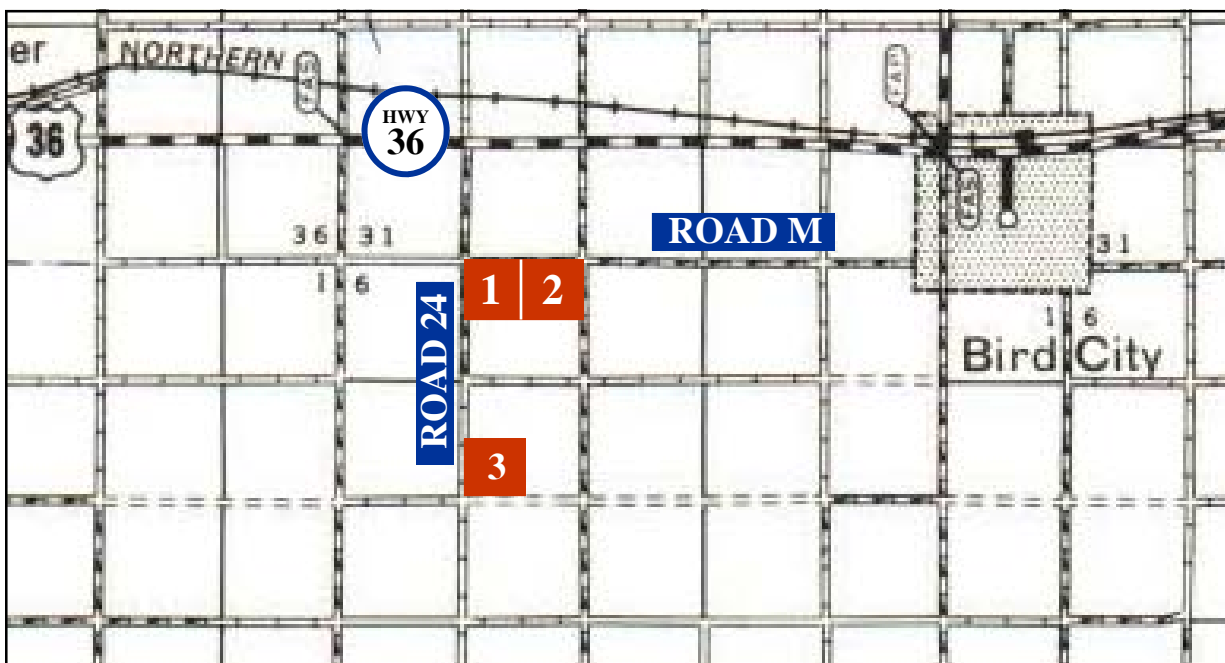
- 78.3 ac. wheat base w/35 bu. yield
 - 13.4 ac. barley base w/41 bu. yield
 - No growing crops
 - No current leases
- Approx. 2013 Taxes: \$733.33



Tract 3 - 160± Acres

SW/4 Sec. 8, 4-38 Cheyenne Co., KS
158.16± Acres Cropland

- 78.9 ac. wheat base w/35 bu. yield
 - 13.6 ac. barley base w/41 bu. yield
 - Approx. 102 acres planted wheat.
- Approx. 2013 Taxes: \$420.06



- No current leases on land after 2015 wheat harvest.
- Buyer will receive Seller's 1/3 share of wheat planted on Tracts 1 & 3.
- Stubble on Tracts 2 & 3 has been sprayed for weeds.
- Possession day of closing on open ground after 2015 harvest on planted acres.

These Three Quarters of Cheyenne County Cropland are located in an excellent wheat producing area, approximately 3 miles west of Bird City, Kansas.

Call Shay Realty
For Prices



SHAY REALTY, INC.

Rodney W. Shay, Broker
785-332-2566 Cell

P.O. Box 576, 107 E. WASHINGTON ST., ST. FRANCIS, KS 67756
800-476-7185 OR 785-332-2566
WWW.SHAYREALTY.COM