

80± Ac. Yuma Co. Native Grass



LEGAL DESCRIPTION:

**1S-48, Sec. 9:
W/SE/4
Yuma County,
Colorado**

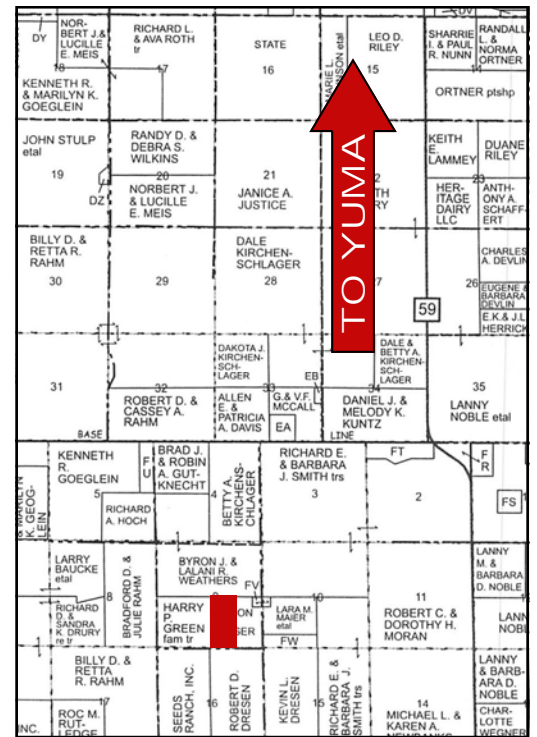
**Located 9.5 miles south
& 1.75 miles west of
Yuma, Colo.**

**1/4 mi. West of intersec-
tion of Co. Rds D & 28**

80± AC. YUMA COUNTY NATIVE GRASS:

- ▶ Active gravel pit excluded
- ▶ Seller reserves all mineral rights including mining of sand & gravel.
- ▶ TAXES: \$41.84

LISTING PRICE: \$48,000



Reese W. Shay, Listing Broker 970-630-5006 Reese@ShayRealty.com



SHAY REALTY, INC.

Serving Kansas, Colorado & Nebraska
107 E. Washington, PO Box 576
St. Francis, KS 67756
785-332-2566
www.shayrealty.com

This information, while not guaranteed, is from sources believed to be reliable.