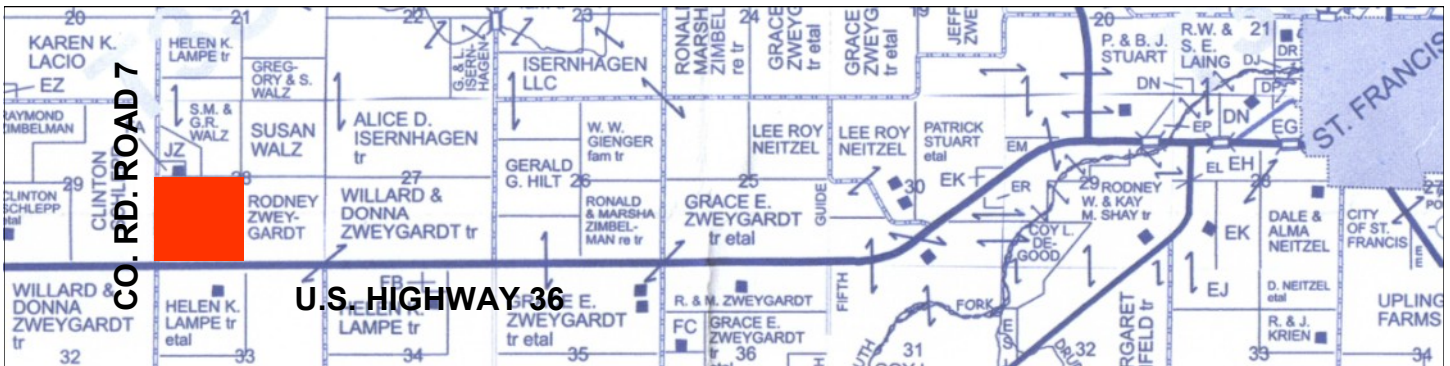


FOR SALE

QUARTER SECTION CHEYENNE CO. KS CROPLAND

SONIA MODRELL & FAMILY, SELLER

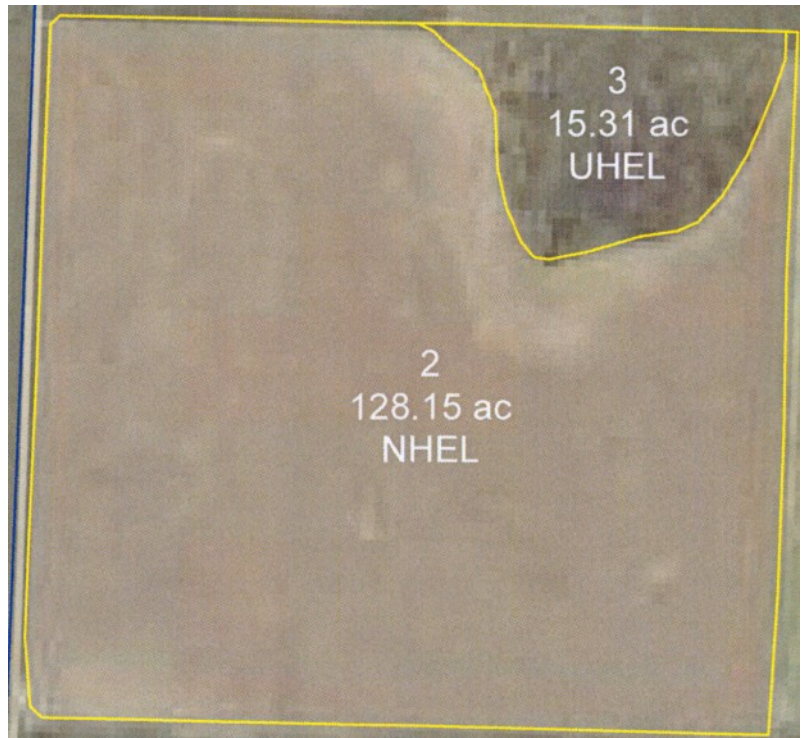
128.15± Acres Cropland & 15.31± Acres Grass



**SW¹/₄ of Sec. 28, T3S-R41W
Cheyenne County, Kansas**

**6 1/2 mi. west of St. Francis
Borders Hwy. 36 & Co. Rd. 7**

2017 Taxes: \$979.39



Rodney W. Shay
Listing Broker

SHAY REALTY

SERVING KS, CO & NE
785-332-5656 OR 785-332-2566
WWW.SHAYREALTY.COM