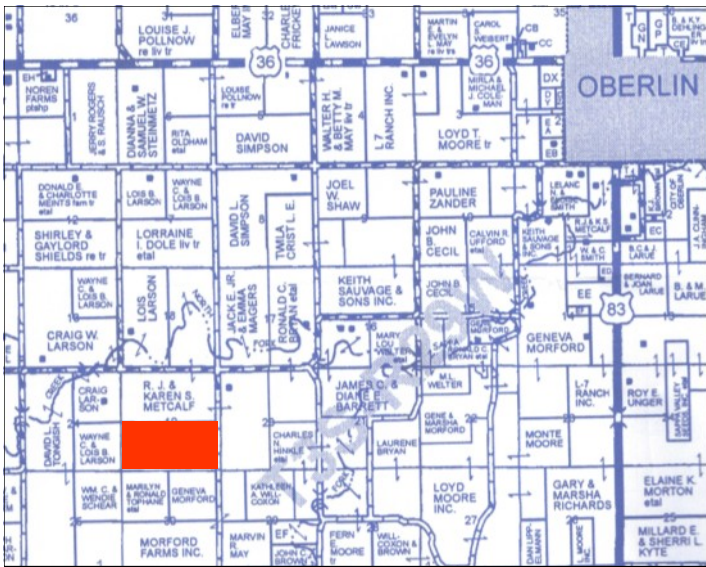


FOR SALE

320± AC. DECATUR CO. KS CROPLAND & GRASS

HAMBLETON FAMILY TRUST, SELLER

166.36± Acres Dryland & 140± Acres Grassland



**½ of Section 19, T3S-R29W
Decatur County, Kansas**

Seller's Minerals go to Buyer

**Base Acres: 142.2
Wheat - 78.35 acres; 37 bu. yld.
Corn - 31.57 acres; 67 bu. yld.
G. Sorghum - 32.28 acres; 59 bu. yld.**

Taxes: \$1,574.92

**Don't miss the
opportunity to
purchase land
just 6 miles
from Oberlin!**



**Rodney W. Shay
Listing Broker**

SHAY REALTY

**SERVING KS, CO & NE
785-332-5656 OR 785-332-2566
WWW.SHAYREALTY.COM**