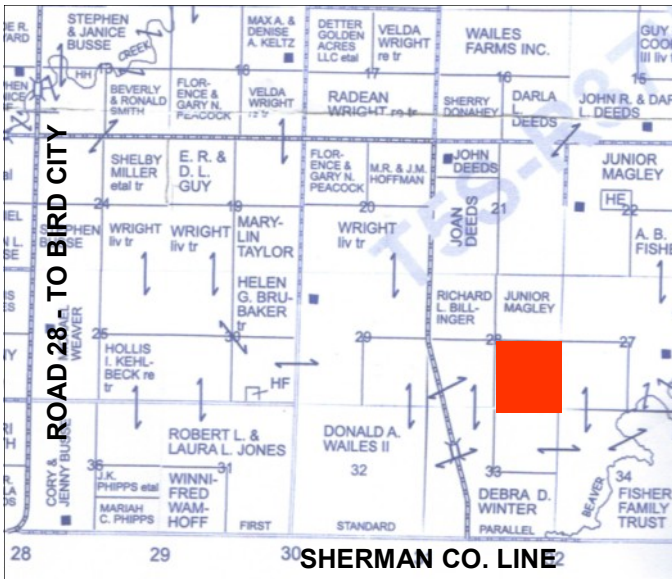


FOR SALE

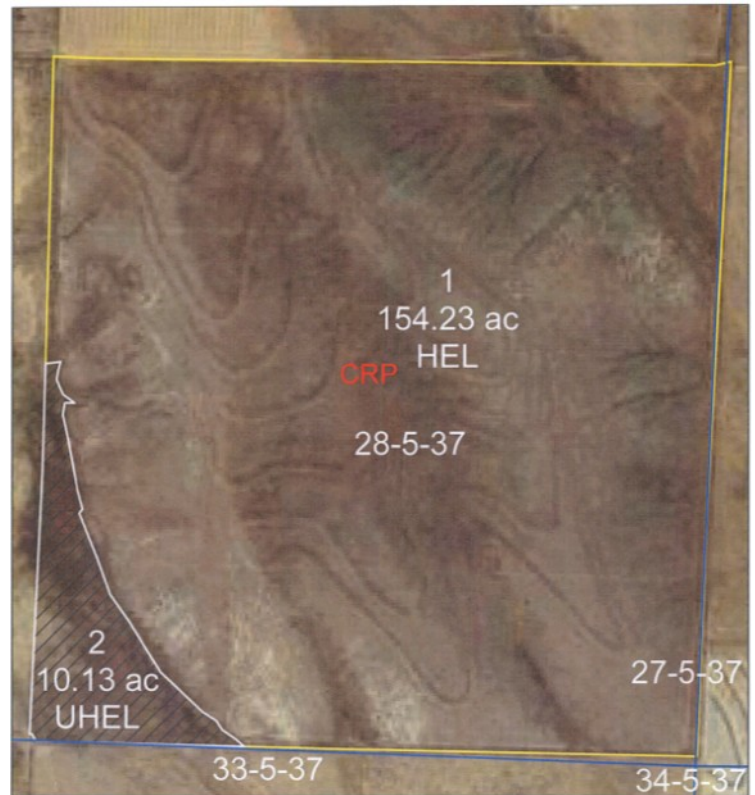
QUARTER SECTION CHEYENNE CO. KS CRP

JERRY & ALAN LONG, SELLER

154.23± Acres CRP & 10.13± Acres Grass



S $\frac{1}{4}$ of Section 28, T5S-R37W
Cheyenne County, Kansas
2 mi. east of Bird City, then 11.5 mi.
south, then .5 mi. east



**Seller's Mineral Interests in
Property go to Buyer**

**154.23 Acres in CRP
Contract expires in 2022
\$4,936.00 annual payment**

Taxes: \$799.39



Rodney W. Shay
Listing Broker

SHAY REALTY

SERVING KS, CO & NE
785-332-5656 OR 785-332-2566
WWW.SHAYREALTY.COM