

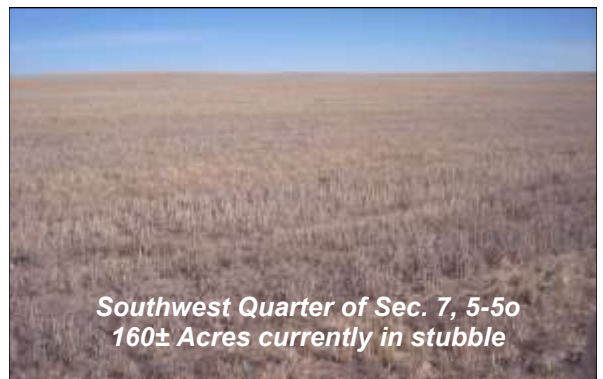
480± Acre Washington Co. Dryland



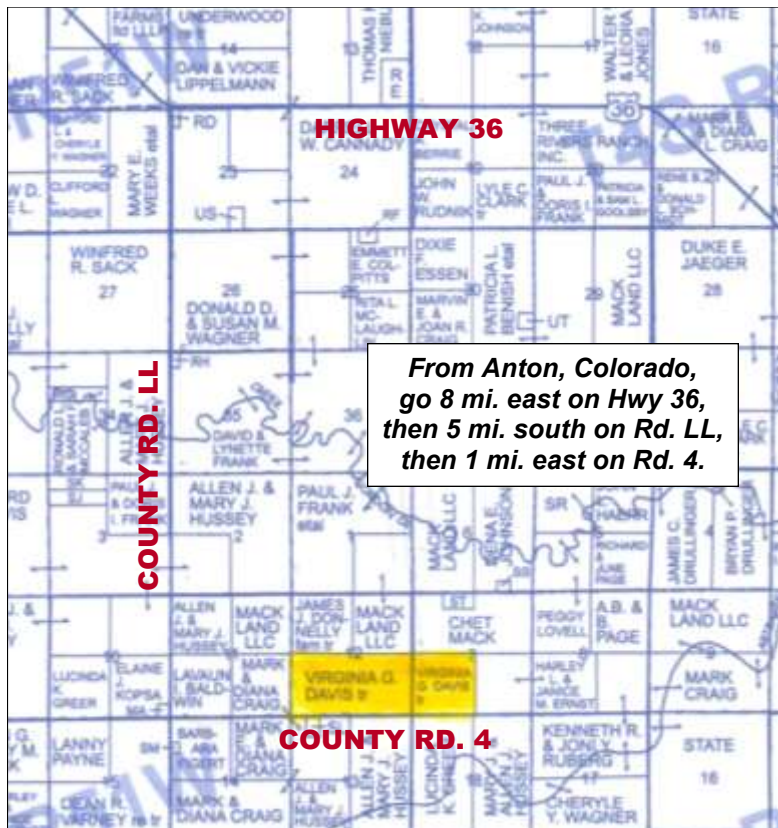
Southwest Quarter of 12, 5-51
160± Acres Planted to Wheat



Southeast Quarter of Sec. 12, 5-51
160± Acres currently in stubble



Southwest Quarter of Sec. 7, 5-50
160± Acres currently in stubble



Township 5 South, Range 51 West of 6th P.M.
South Half of Section 12
107.10 Wheat Base; 38 Bu. Yld.
107.80 Corn Base; 74 Bu. Yld.
Current Taxes: \$537.16

Township 5 South, Range 50 West of 6th P.M.
Southwest Quarter of Section 7
52.10 Wheat Base; 38 Bu. Yld.
52.20 Corn Base; 74 Bu. Yld.
Current Taxes: \$279.72

Great opportunity to purchase three nice contiguous quarter sections!

LISTED PRICE: \$1,400/ACRE

Rodney W. Shay, Listing Broker

785-332-2566 office 785-332-5656 cell



SHAY REALTY, INC.

Serving Kansas, Colorado & Nebraska

P.O. Box 576, St. Francis, KS 67756

www.shayrealty.com