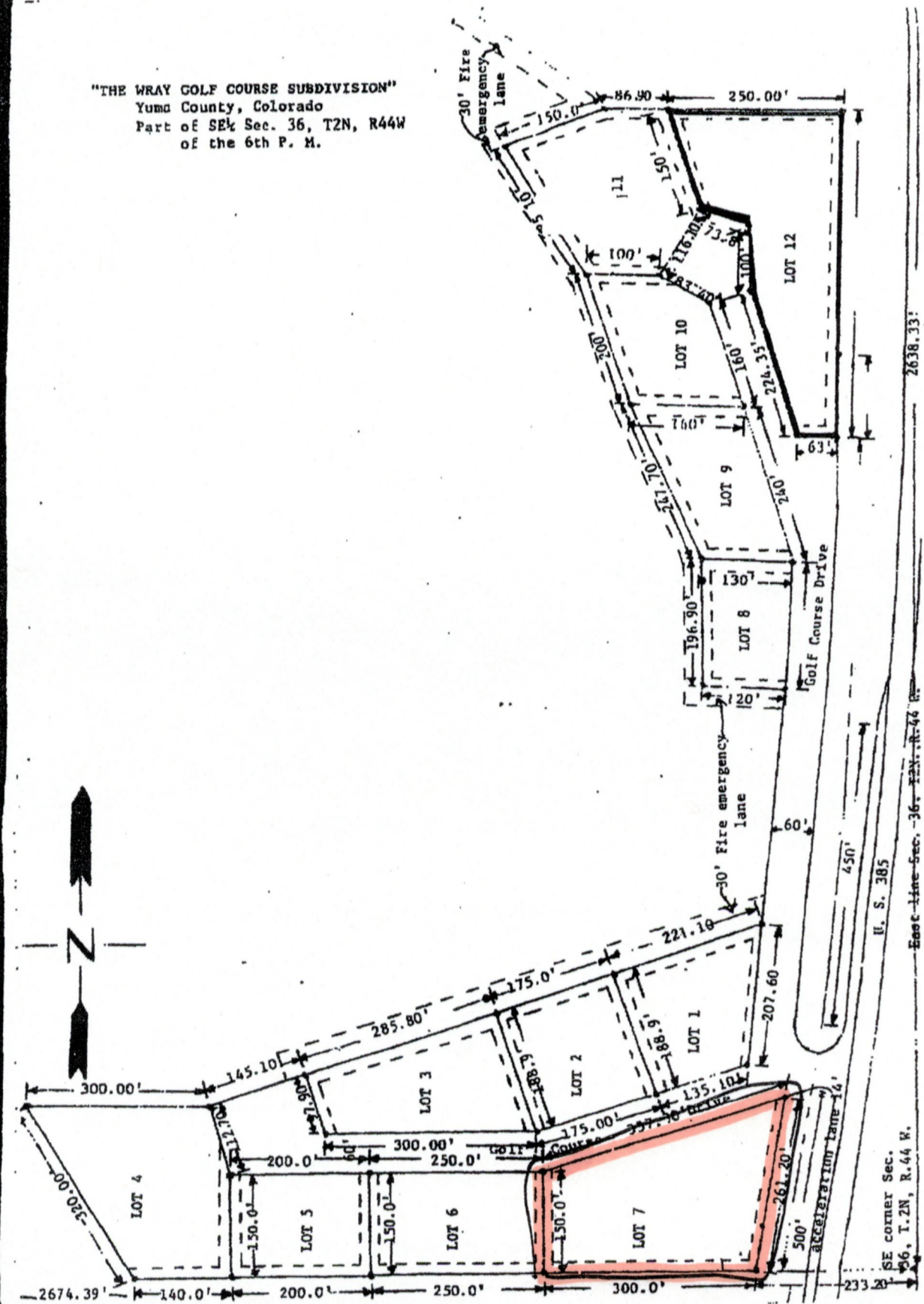


"THE WRAY GOLF COURSE SUBDIVISION"
 Yuma County, Colorado
 Part of SE 1/4 Sec. 36, T2N, R44W
 of the 6th P. M.



SE corner Sec.
 36, T.2N, R.44 W.

2638.33'

U. S. 385
 East line Sec. 36, T2N, R.44 W.