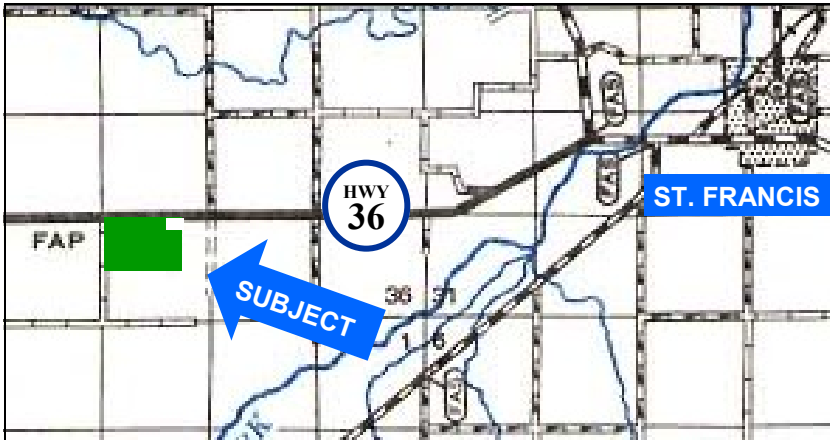


FOR SALE

227.2± ACRES CHEYENNE CO. GRASSLAND

HELEN LAMPE FAMILY, SELLERS



201.6± Acres Grass

26.6 Acres Expired CRP

NW/4 Sec. 34 & NW/4NE/4 and SW/4NE/4

3S-41W less a Tract, Cheyenne Co., KS

- Good 4-wire fencing
- Well-watered pasture
- Easy access from Highway 36

Reduced Price:
\$180,000



RODNEY W. SHAY
BROKER
785-332-5656 CELL

SHAY REALTY

33998 Co. Road AA, WRAY, CO 80758
800-476-7185 OR 785-332-2566
WWW.SHAYREALTY.COM