

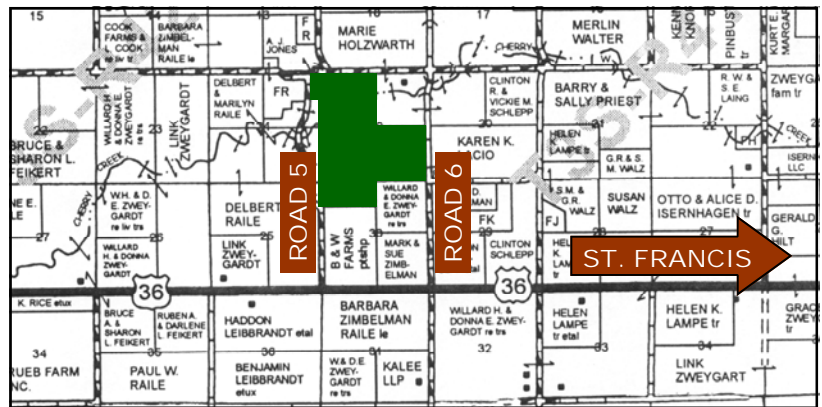
# 583± Ac. Grass & Cropland



583± Acres of Cheyenne County land is located 8 miles west and 1 mile north of St. Francis, KS. along Highway 36, between roads 5 & 6.

## 583± Acres Ag Land

- ▶ 507.3± Ac. Grass
- ▶ 43.3± Ac. CRP
- ▶ 32.4± Ac. Crop
- ▶ FSA Bases:
  - Wheat - 16.9 ac.; 33 bu. yld.
  - Barley - 4.9 ac.; 39 bu. yld.



**2011 TAXES:** \$390.02  
**LISTING PRICE:** \$410,000.00



**LEGALS:**  
**W/2 & SE/4 Sec. 19, 3-41;**  
**N/2NW/4 Sec. 30, 3-41;**  
**Tract in E/2NE/4**  
**Sec. 24, 3-42**  
**in Cheyenne County, KS**



Rodney W. Shay, Listing Broker

785-332-2566

785-332-5656 cell



# SHAY REALTY, INC.

107 E. Washington, PO Box 576  
 St. Francis, KS 67756  
 785-332-2566  
[www.shayrealty.com](http://www.shayrealty.com)